



HYDROTECH

ENGINEERING



📍 A/7, Amber Tower, Sarkhej,
Ahmedabad-380055. (Gujarat)

☎ +91 7990806103

✉ hydrotech380055@gmail.com

HYDROTECH was established in 2008 by Mr. Aslam who had wide experience in pump manufacturing. The company is located in the bustling city of Ahmedabad and manufactures a whole host of Mechanical Seal for different kinds of applications and for service back up. We also supply spares of mechanical seals. We serve the overseas market too and have well-known companies from the pharma, food, textile, steel, power and other industries in Asia and Africa, as our customers.

We use the finest technology for manufacturing Mechanical Seal. Our team comprises motivated professionals who are always looking to innovate. Thanks to them, we have been able to design new solutions and earned the label of a pioneering company.

Our products' distinguishing features are high level performance, corrosion resistance, reliability and interchangeability. Our process - oriented manufacturing ensures on - time delivery while our continuous quality improvement programme enhances the durability and reliability of our Mechanical Seal. In addition, we service all kinds of Mechanical Seal. Apart from standard applications, we provide cost - effective solutions for special applications as well.

Superior quality, delivery in time, competitive pricing and impeccable customer service are our hallmarks.

Our vision

is to improve the Mechanical Seal. Manufacturing process on a continuous basis and be known as provider of quality Mechanical Seal across the globe.

Our mission

is to provide the best Mechanical Seal to our clients with better services... products through continuous originality and up gradation of technology.



CARTEX-DX



Application :

Widely used in water treatment, power plants, metallurgy, food processing, pharmacy, chemical engineering, fertilizer and paper making. Suitable for clear water pumps, chemical pumps, double suction pumps, paper pulp pumps, compressors and other rotary devices. Good for replacing gland packing.

Operation Parameters:

- **Pressure** : 2.5 MPa or less
- **Temperature** : 40 ~ 180 °C
- **Linear Speed** : 15 m/s or less

Materials :

- **Rotary Ring Face** : TC/SiC
- **Stationary Ring Face** : Carbon/SiC/TC
- **Elastomers** : NBR/EPDM/Viton/Aflas/FFKM
- **Springs** : SS304/SS316/HC-276
- **Metal Parts** : 410S/SS304/SS316/SS316L/Hastelloy

Mediums :

Water, oil, weak acid, weak alkali, and other normal mediums (2001 and 2002)
OR flammable, explosive and poisonous gas (2004 and 2005)





CONICAL SPRING SEAL



Application :

widely used in chemical centrifugal pumps, clean water pumps, sewage pumps, temperature control pumps, submerged pumps, and heat-transfer oil pumps. Mainly used in oil refining, chemical engineering, chemical product transportation, water treatment and chemical fiber industry. This product can be an alternative to similar products from EG&G SEAL OL, Flexibox and Roten.

Operation Parameters:

- *Pressure* : 1.0 MPa or less
- *Temperature* : - 20 ~ 180 °C
- *Linear Speed* : 10 m/s or less

Materials :

- *Rotary Ring* : Carbon/SiC/TC
- *Stationary Ring* : Carbon/SiC/TC
- *Elastomers* : NBR/Viton/EPDM/PTFE/FFKM
- *Springs* : SS304/SS316
- *Metal Parts* : 410S/SS304/SS316/SS316L

Mediums :

Oil, water, amorphism acid, alkali, salt, and organic solvents.



METAL BELLOW SEAL



Application :

Widely used in petrochemical engineering, oil refining, chemical processing, chemical fiber manufacturing, food and beverage processing, pharmacy, thermoelectricity and paper making. Designed for chemical pumps, oil pumps, screw pumps, compressors and oil extraction equipment.

Operation Parameters:

- *Pressure* : - 0.1 ~ 2.5 MPa
- *Temperature* : - 40 ~ 200 °
- *Linear Speed* : 15 m/s or less

Materials :

- *Rotary Ring Face* : Carbon/SiC/TC
- *Stationary Ring Face* : SiC/TC
- *Elastomers* : NBR/EPDM/Viton/Aflas/FFKM
- *Springs* : SS316/AM350/Inconel 718/HC-276
- *Metal Parts* : SS316/SS316L/4J42/Hastelloy

Mediums :

Hot water, oil, liquid hydrocarbon, acid, alkali, solvents, paper pulp and other medium-and-low-viscosity content.



CARTRIDGE SEAL



Application :

Widely used in petrochemical engineering, oil refining, chemical processing, food and beverage processing, pharmacy, water treatment and paper making.

Operation Parameters:

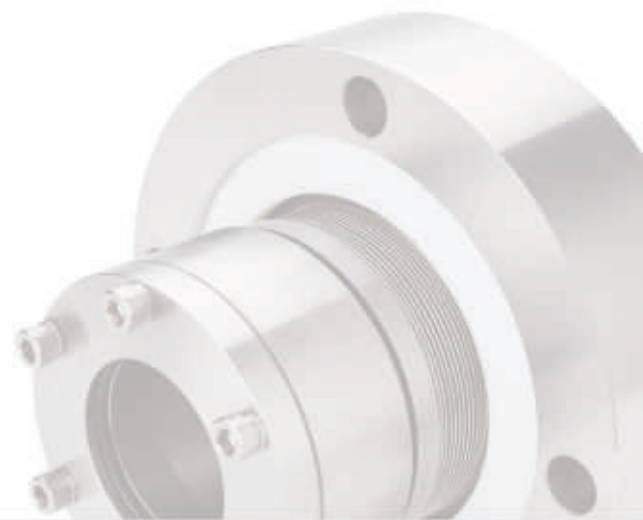
- *Pressure* : - 0.1 ~ 2.0 MPa or less
- *Temperature* : - 75 ~ 400 °C
- *Linear Speed* : 30 m/s or less

Materials :

- *Rotary Ring Face* : Carbon/TC
- *Stationary Ring Face* : Carbon/TC
- *Elastomers* : Soft Carbon
- *Springs* : SUS316L/AM350/Inconel718
- *Metal Parts* : 2Cr13/SUS316L/4J42/Hastelloy

Mediums :

Oil, liquid hydrogen, acid, alkali, solvents, paper pulp and other medium-and-high-viscosity content under high or extremely low temperatures.





MG1 SEAL



Application :

Widely used in water pumps, piping pumps, sewage pumps, immersible motors, vacuum equipment and other rotary devices for sewage treatment, city water supply, chemical engineering, pharmacy, food processing, and paper making..

Operation Parameters:

- **Pressure** : 1.0 MPa or less
- **Temperature** : - 20 ~ 120 °C
- **Linear Speed** : 10 m/s or less

Materials :

- **Rotary Ring** : Carbon/SiC/TC
- **Stationary Ring** : Al₂O₂/SiC/TC
- **Elastomers** : NBR/EPDM/Viton
- **Springs** : SS304/SS316
- **Metal Parts** : SS304/SS316

Mediums :

Oil, water, sewage, food and beverage, paper pulp and other weak-corrosion content.





MULTISPRING SEAL



Application :

Oil industry, chemical engineering, chemical fiber, food processing, pharmacy, paper pulp and environmental protection industry. Designed for chemical pumps, water pumps, piping pumps, screw pumps, compressors and other rotary devices.

Operation Parameters:

- **Pressure** : 1.2 MPa or less
- **Temperature** : - 40 ~ 200 °C
- **Linear Speed** : 25 m/s or less

Materials :

- **Rotary Ring** : Carbon/SiC/TC
- **Stationary Ring** : Al₂O₃/SiC/TC
- **Elastomers** : NBR/EPDM/Viton/PTFE/FFKM
- **Springs** : SS304/SS316/HC-276
- **Metal Parts** : SS304/SS316/SS316L/Hastelloy

Mediums :

Oil, water, amorphism acid, alkali, salt, and organic solvents.





ROBYN SEAL



Application :

Widely used in oil and water circulation pumps, piping pumps, and vacuum pumps for industries such as sewage treatment and paper-making. This product can be an alternative to similar products from EG&G SEAL OL.

Operation Parameters:

- *Pressure* : 0.8 MPa or less
- *Temperature* : - 20 ~ 120 °C
- *Linear Speed* : 10 m/s or less

Materials :

- *Rotary Ring Face* : Carbon/SiC/TC
- *Stationary Ring Face* : Al₂O₃/SiC/TC
- *Elastomers* : NBR/EPDM/Viton
- *Springs* : SS304/SS316
- *Metal Parts* : SS304/SS316

Mediums :

Oil, water, weak acid and alkali and other corrosive mediums.





AGITATOR SEAL



Materials :

- **Rotary Ring** : SiC/Carbon
- **Stationary Ring** : TC/SiC
- **Elastomers** : NBR/Viton/EPDM/PTFE/FFKM
- **Springs** : SS304/SS316/HC-276
- **Metal Parts** : SS304/SS316/SS316L

Mediums :

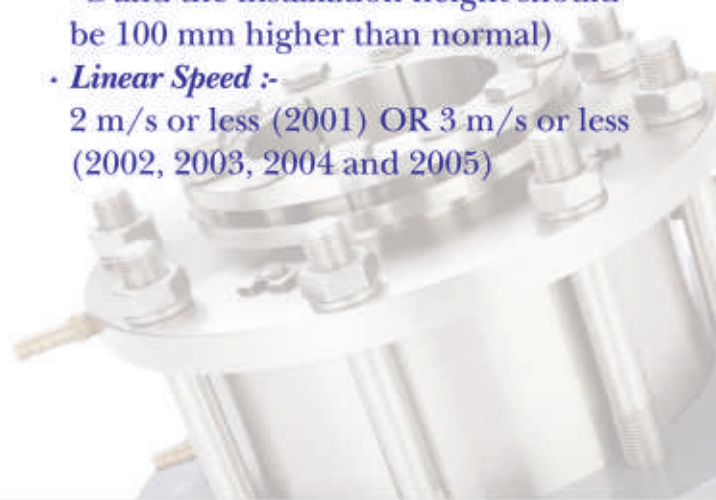
Water, oil, acid, alkali,
salt, solvents and paper pulp.

Application :

Mainly used in top driven vertical type agitation equipment, which does not have strict requirements for leakproofness.

Operation Parameters:

- **Pressure** :-
0.1 ~ 0.6 MPa (when the pressure is bigger than 0.6 MPa, the pressure balancing device is needed and its connection size can be customized)
- **Temperature** :-
20 ~ 150 °C (cooling tank is required if the temperature is higher than 150 °C and the installation height should be 100 mm higher than normal)
- **Linear Speed** :-
2 m/s or less (2001) OR 3 m/s or less (2002, 2003, 2004 and 2005)





TEFLON BELLOW SEAL

Application :

Widely used in acid proof pumps, plastic pumps, alkali pumps, vacuum equipment and other rotary devices.

Operation Parameters:

- *Pressure* : 0.6 MPa or less
- *Temperature* : -20 to 120 °C
- *Linear Speed* : 10 m/s or less

Materials :

- *Rotary Ring* : Filled PTFE (Teflon)/SiC
- *Stationary Ring* : Al₂O₃/SiC/Carbon
- *Elastomers* : PTFE
- *Metal Parts* : SS304/SS316

Mediums :

Sulfuric acid hydrocarbon acid, phosphoric acid, acetic acid, and nitric acid With various degrees, etc.

Cartridge Installation Is Easy – There Are No Setting Clips to Remove

Construction
Cland and Sleeve
316 Stainless Steel

**316 Stainless
Steel Cup Point
Set Screws for
Positive Drive**

**C 276 Springs
Standard**

**Stationary Face
Carbon Standard
(Sintered Silicon
Carbide Optional)**

**Rotary Face
Balanced Design
Sintered Silicon
Carbide**

**Anti-rotation Pin
Prevents Face from Spinning**

**Heavy Duty Lugs
Prevent Stationary
from Turning**

**Teflon Setting Ring
Sets Seal and Is Not Removed
After Installation**

**Elastomers
FKM Standard; FKM (Perfluoro-Elastomer) or
EPR (Ethylene Propylene Rubber) Optional**

**Non Asbestos Gasket
Standard
PTFE Optional**



A/7, Amber Tower, Sarkhej,
Ahmedabad-380055. (Gujarat)



+91 7990806103



hydrotech380055@gmail.com

